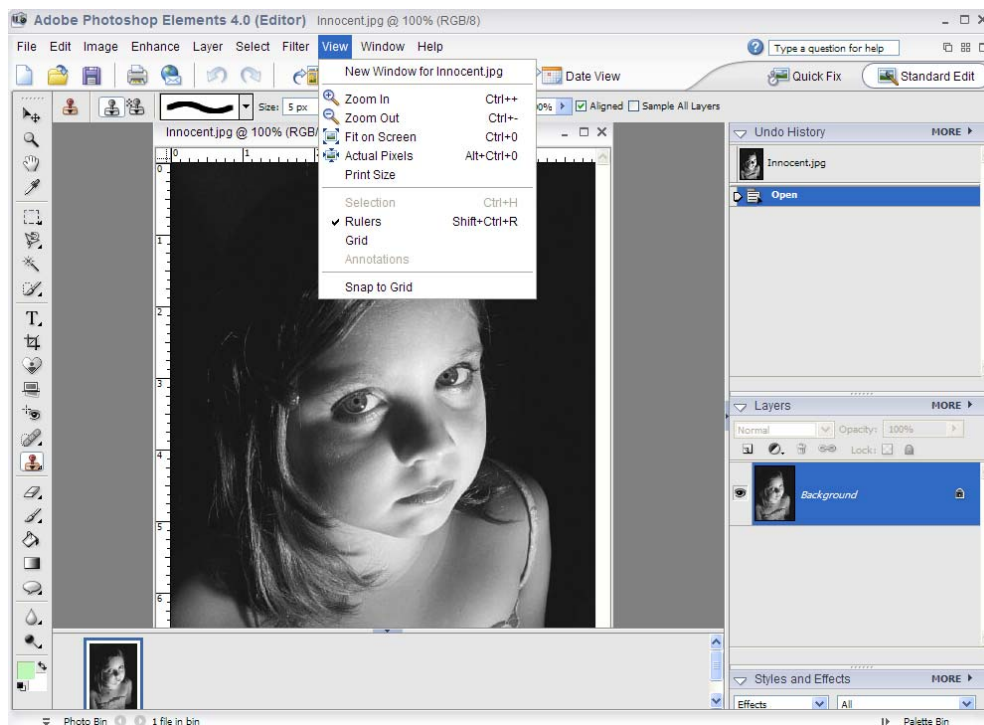


VIEWING PICTURES FOR RETOUCHING

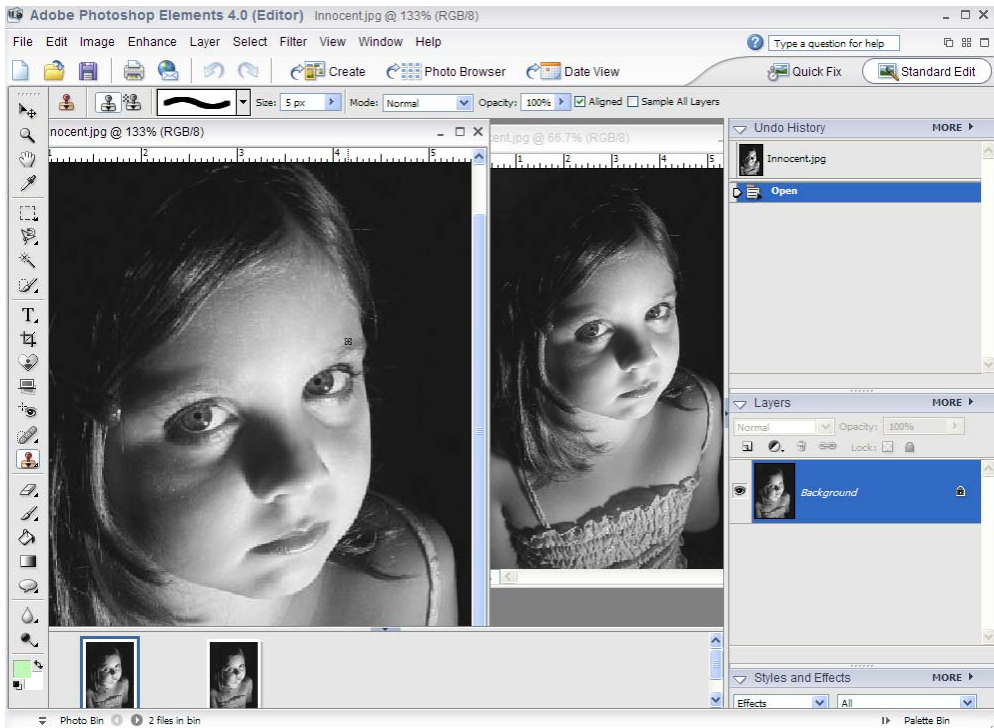
Sometimes when you are fixing old pictures or removing unwanted features from pictures you need to zoom in very close to see the details of your work. This is fine but you also need to see the effect on the picture as a whole. At one time the only way to do this was to continually zoom in and out which is very time consuming.

However there is a feature in Elements that allows you to have two separate windows of the same picture. By having this enabled you can have different views of the same image and therefore zoom in on one whilst watching the overall effect on the other. To open simultaneous windows of the same image proceed as follows:

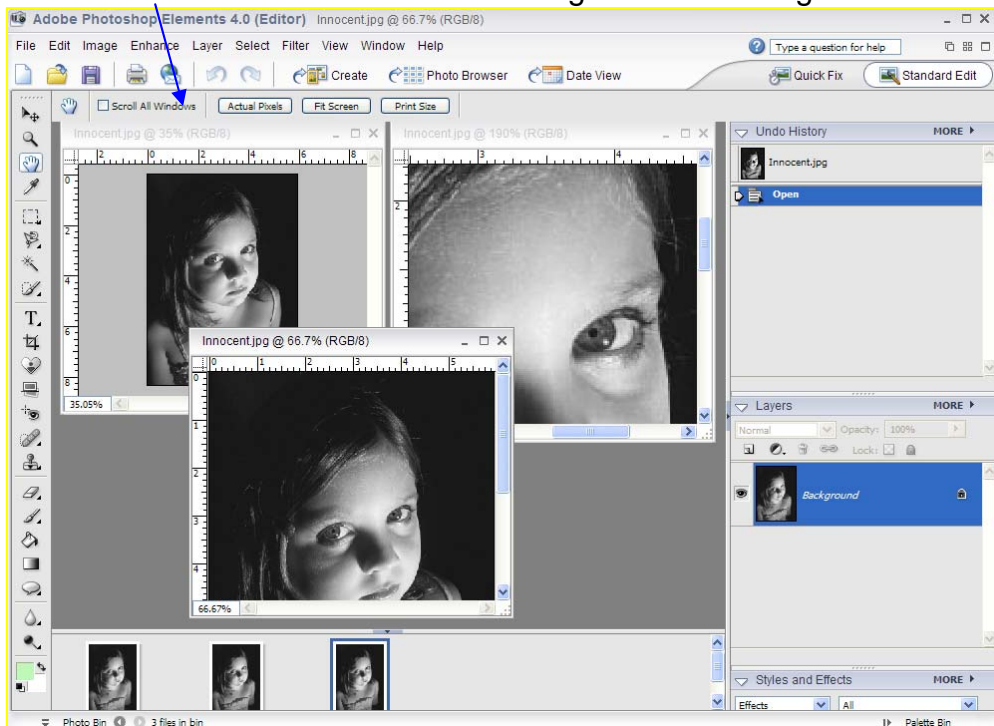
Open up the image you wish to work on and then select View> New Window for XYZ where XYZ is the name of your image, see below:



Both pictures will appear in the picture bin at the bottom of the Elements work space and then it is just a matter either dragging the image without the blue border (the inactive one) or going to the menu bar and choosing Images >tile or Images>cascade. This will bring both images into the work space and you can change the zoom of one for “interfering” while watching the result on the other image for the overall effect. See below:



You are not limited to just two images; try opening a third image with a different magnification. When you have more than two open however it can be a problem moving to the section of the image you want to manipulate. To counter this choose the “Hand Tool” from the tool bar and on the Options Bar check the “Scroll All Windows” box and all the images will move together. See below:



I hope this helps when you get into a situation where close up work is necessary but you need to see the “big picture.”